

















apartment.










MSTHEM SUMMER 2024
PREVIEW

SUNDAY MEMORY

05.23 / PM14:00

A woman in a white, sleeveless, floor-length dress is walking from left to right. She is wearing a light-colored visor with a red flower detail on the side, a thin necklace, and black high-heeled sandals. She is carrying a black rectangular handbag with a top handle. The background consists of a dark stone wall and lush green foliage with some pink blossoms. The lighting is soft and natural, suggesting an outdoor setting.

MSTHEM SUMMER 2024
PREVIEW

SUNDAY MEMORY

05.23 / PM14:00

MSTHEM OFFICAL









lobby.







2 0 2 4

N E W A R R I V A L

KEIGAN

A woman with dark hair pulled back, wearing a long, olive-green, belted dress with a high collar and long sleeves. She is standing in a modern interior with wood paneling and a window. The word "KEIGAN" is overlaid in large white letters across the center of the image.

KEIGAN



2 0 2 4

N E W A R R I V A L

KEIGAN





MSTHEM SUMMER 2024
PREVIEW

SUNDAY MEMORY

05.23 / PM14:00

yard.












KEIGAN

A woman is standing against a wall, leaning her right arm on a vertical metal strip. She is wearing a black wide-brimmed hat, a black long-sleeved shirt with a tie belt, a black mini skirt, and black high-heeled sandals. She is holding a black bag in her left hand. The background consists of a light-colored tiled wall and a dark, textured wall on the left. The text 'MSTHEM OFFICAL' is overlaid in the center of the image.

MSTHEM OFFICAL



MSTHEM SUMMER 2024
PREVIEW

SUNDAY MEMORY

05.23 / PM14:00



KEIGAN



Room 1.

















room 2.

living room.



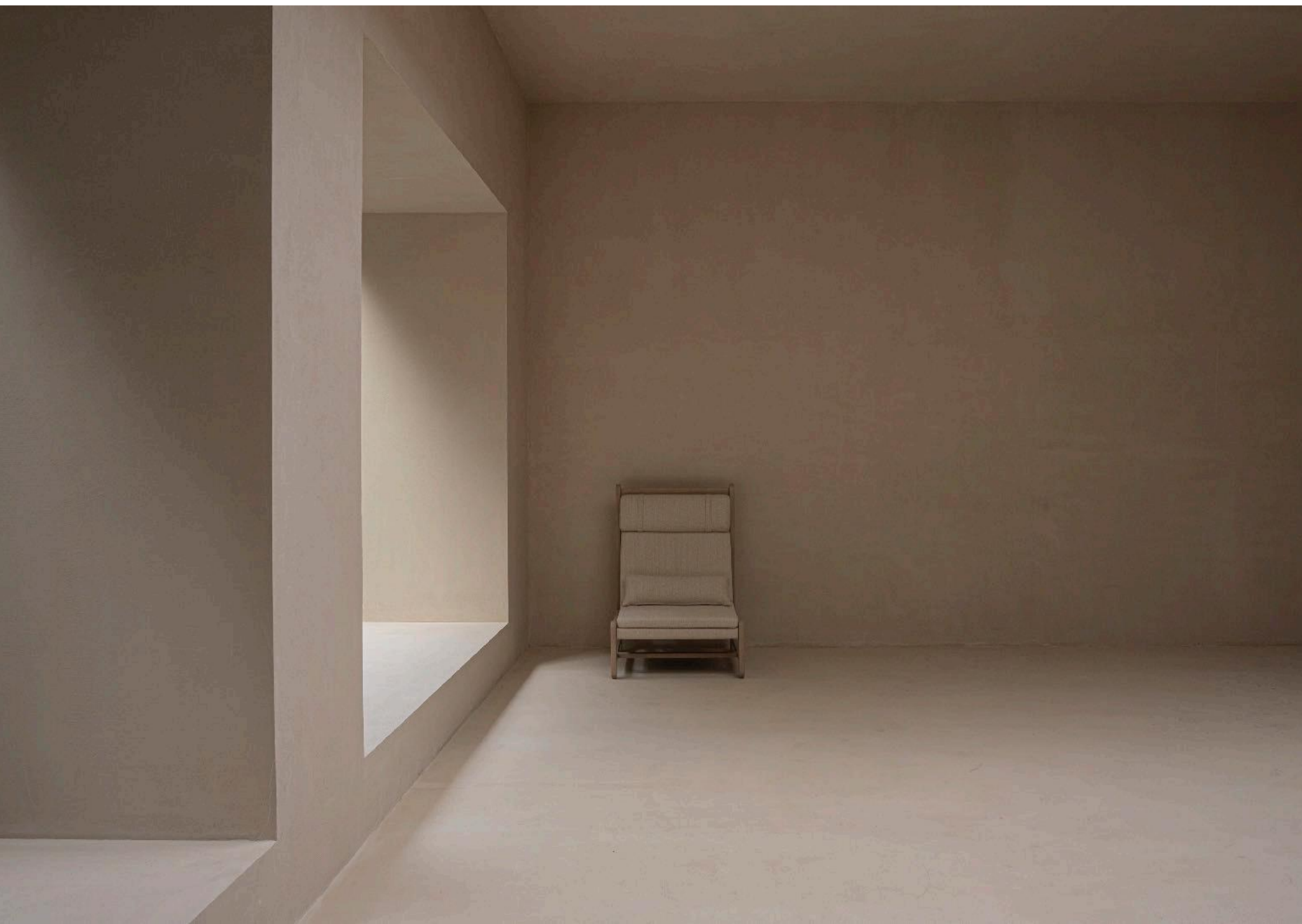








wabi-sabi











U N I C A



U

N

I

C

A



enndou



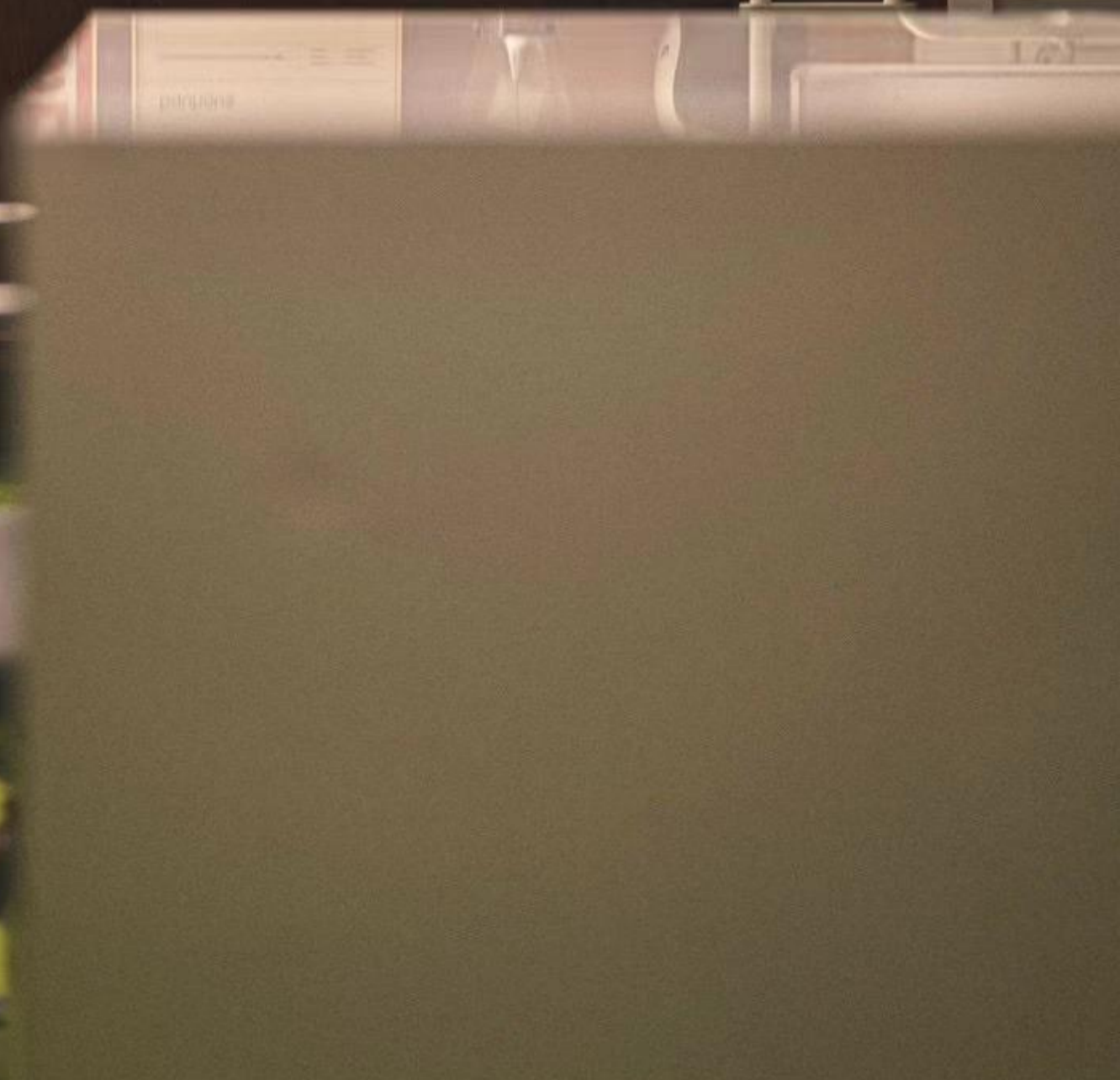
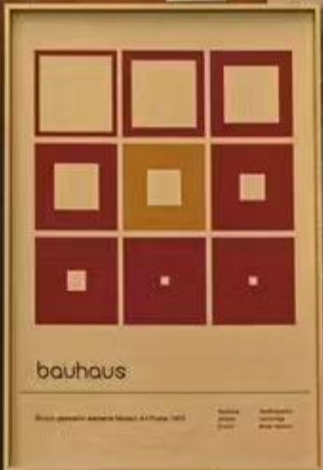


enndou

office.

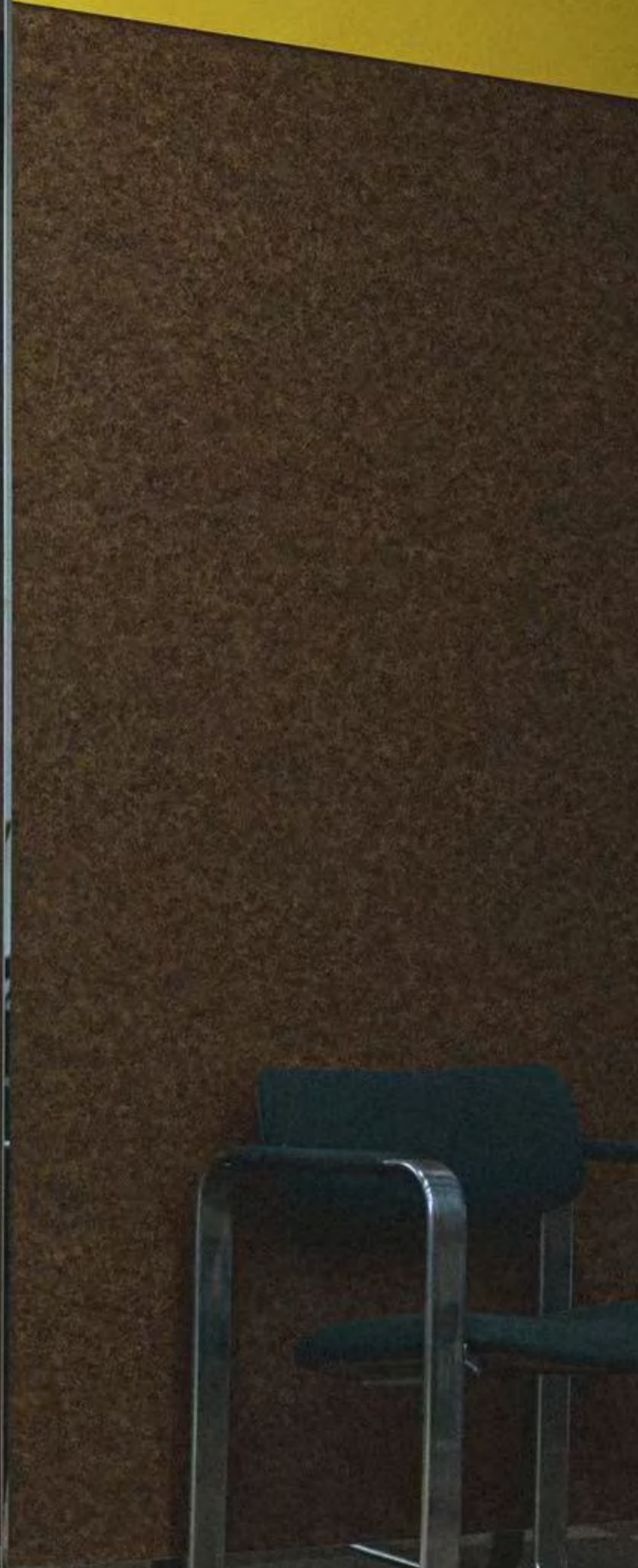




















makeup room.

